


THE CONTROL YOU WANT THE SECURITY YOU NEED

A new generation of secured
key control systems



DO YOU REALLY HAVE CONTROL?

A circular image showing a wooden key rack with many keys hanging from it. The keys are organized in rows, and some are missing, leaving gaps. The text is overlaid on the center of the image.

Do you know who took the key?

When it was taken?

Why it was taken?

Do missing keys sound familiar?



MATRIX

When you have dozens or even hundreds of valuable keys, control and security are a top concern

MATRIX is a premium key management system that provides the best combination of key control and maximum security

Whether you are a car dealership, property manager, university, law enforcement or any other organization wishes to regain control over your keys – we got the best and most advance solution for your needs!

"We choose MATRIX since other than control it provides the highest level of security to our keys and assets.

In addition, it has massive capacity to contain all our keys in only one cabinet - with any other systems we would have needed at least 3 units.

The MATRIX is truly the best key management system I've seen"

*Jonathan Eltes
Dealer Principle
Mercedes-Benz Brampton*

Simple



1 **Identify**
Biometric / RFID Tag
Pin code



2 **Select a key**
According to personal
authorizations



3 **Receive access**
To the requested key
only



Secured

The MATRIX is nothing like any other key cabinet! It gives us peace of mind knowing our keys are protected along with all the management features we need

Kelly G McNeil
SUNSET CHEVROLET, WA



Unlike other systems where anyone who opens the front door can steal or duplicate any key in the cabinet, MATRIX protects each key in a separate locked compartment with no ability to access without manager permissions



**You cannot steal what
you cannot touch**



Video Records

For an even higher level of security, a dedicated camera will capture every transaction.

Using cross-cutting reports, now you can also have a visual of every activity made





MATRIX ULTRA

Up to **1,782 keys**

MATRIX ULTRA is the largest capacity unit in the market allows you to store all your keys in a single cabinet and save valuable space

"We have used other key management systems but the Matrix system we have is one of the best in the industry. It allows us to manage our keys in a very effective manner. This is a mandatory item for all dealers"

Rob Kieswetter
VP Sales
Kieswetter Mazda



Control



MATRIX power software contains many unique features that provide you better control along with the security level you need

Limit system access to working hours only

Limit the number of keys that a user can hold at the same time

Deny user access when driving license expires (for vehicle keys only)

Require users to report check out reason

Determine due date of each key

Send alerts when a key wasn't returned on time (user + manager)

Allow users to report parking location and vehicle condition

Document every transaction by video camera

Send alerts when a drawer was forced open and start the camera

Control from a remote location

Efficient



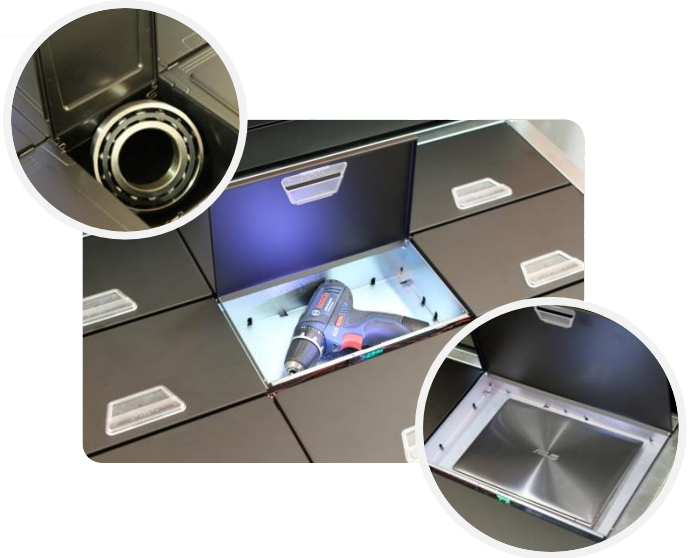
WE GIVE YOU MORE

In the same system that you manage keys, you can secure all dealership license plates in a dedicated drawer while controlling the access of users to that drawer

Now you have the assurance that the license plates are protected and have video records of every transaction made

MANAGE YOUR VALUABLE OBJECTS

MATRIX allows you to secure and manage every valuable object. From expensive devices and parts from the garage to laptops, firearms and even cash deposit. Everything is possible!



Models



INDUSTRY BIGGEST

198 / 396 / 594 / 792 / 990 /
1188 / 1386 / 1584 / 1782 KEYS



ULTRA (Floor standing)

Dimensions (WxHxD):
115x145x71cm (45x57x27.6 inch)
Weight: Up to 450kg (1,000 lb.)

Content: PC / 15" touch screen / UPS
Optional: Biometric reader /
RFID reader / barcode scanner /
speakers / video camera

96 / 192 / 288 / 384 / 480 KEYS



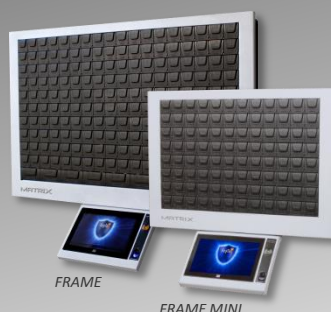
COMPACT (Desktop)

Dimensions (WxHxD):
84x74x56cm (33x29x22 inch)
Weight: Up to 145kg (320 lb.)

Content: PC / 12" touch screen / UPS
Optional: Biometric reader /
RFID reader / barcode scanner /
speakers / video camera / trolley

FRAME MINI: 32 / 48 / 96 KEYS

FRAME: 66 / 99 / 198 KEYS



FRAME (Wall mounted)

Dimensions (WxHxD):
FRAME 39.8x26x4.5 inch (100x66x11cm)
FRAME MINI 28x20x4.5 inch (70x50x11cm)
Weight: FRAME 79 lb. (36kg),
FRAME MINI 62lb. (28kg)

Content: 10.2" panel
Optional: Biometric reader /
RFID reader / video camera

Shown capacity in one cabinet. Unlimited extensions units can be added

NORTH AMERICA

Dial free: 855-586-2874

85558-MATRI-X

usa@matrix-cabinet.com

www.matrix-cabinet.com

GLOBAL

info@matrix-cabinet.com

www.matrix-cabinet.com

